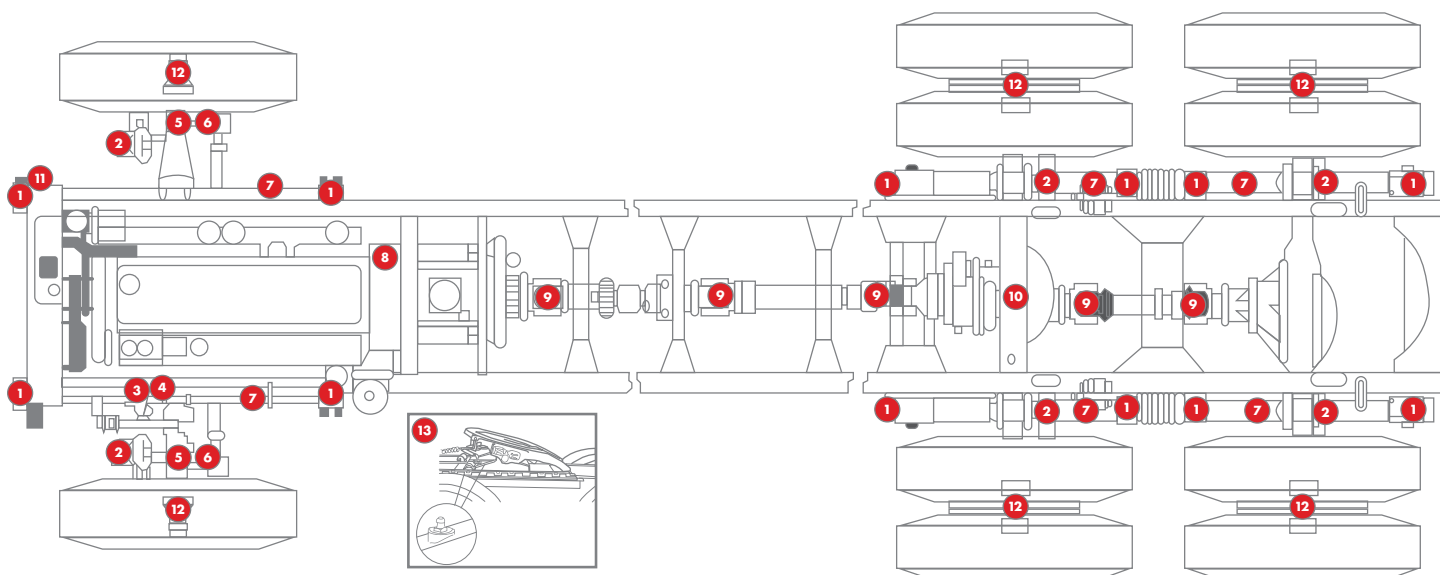




FLEET GREASE: KNOW YOUR BEST OPTIONS

Each of your trucks has numerous grease applications. We have created this simple guide to highlight your options for the main greasing points on your vehicles.

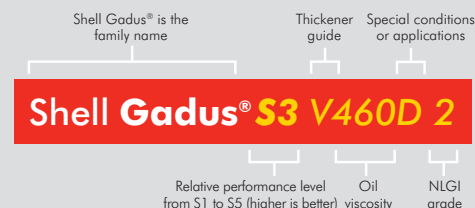


- 1. Spring hangers
- 4. Drag link and steering shaft
- 8. Clutch bearing linkage
- 11. Steering assist cylinder
- 2. Brake Cams / Slack Adjusters
- 5. Kingpin (upper and lower)
- 9. U-joints (cross joint and telescoping spline)
- 12. Wheel bearings
- 3. Steering gear
- 6. Tie-rod, Pitman arms
- 10. T-ride bogie beam
- 13. Fifth wheel

Fleet Grease Applications/ Over-the Road Trucks	GOOD	BETTER	BEST
Spring hangers	Shell Gadus S3 V220C 2	Shell Gadus S3 V550L 1	Shell Gadus S3 V460D 2
Brake Cams / Slack Adjusters	Shell Gadus S3 V220C 2	Shell Gadus S2 V460A 2	Shell Gadus S3 V550L 1
Steering Gear and Linkages	Shell Gadus S3 V220C 2	Shell Gadus S3 V550L 1	Shell Gadus S3 V460D 2
Kingpin (upper and lower)	Shell Gadus S3 V220C 2	Shell Gadus S3 V550L 1	Shell Gadus S3 V460D 2
Clutch bearing linkage	Shell Gadus S3 V160CP 2	Shell Gadus S3 V220C 2	Shell Gadus S5 V220 2
U-joints (cross joint and telescoping spline)	Shell Gadus S3 V160CP 2	Shell Gadus S3 V220C 2	Shell Gadus S5 V220 2
T-ride bogie beam	Shell Gadus S3 V160CP 2	Shell Gadus S3 V220C 2	Shell Gadus S3 V460D 2
Steering assist cylinder	Shell Gadus S3 V160CP 2	Shell Gadus S3 V220C 2	Shell Gadus S5 V220 2
Wheel bearings	Shell Gadus S3 V160CP 2	Shell Gadus S3 V220C 2	Shell Gadus S5 V220 2
Fifth wheel	Shell Gadus S3 V220C 2	Shell Gadus S3 V460D 2	Shell Gadus S3 A1000XD 2

GREASE NAMES

The following naming system is being used for Shell greases



KEY LETTERS USED

- A** = Wet (aqueous) conditions
- C** = Colored grease
- D** = Contains solids, suitable for shock-load conditions
- K** = Low temperatures
- P** = Premium
- T** = Extreme-temperature applications, polyurea thickener
- V** = Versatile, lithium, lithium calcium or lithium complex thickener
- XD** = Greater than 3% solids